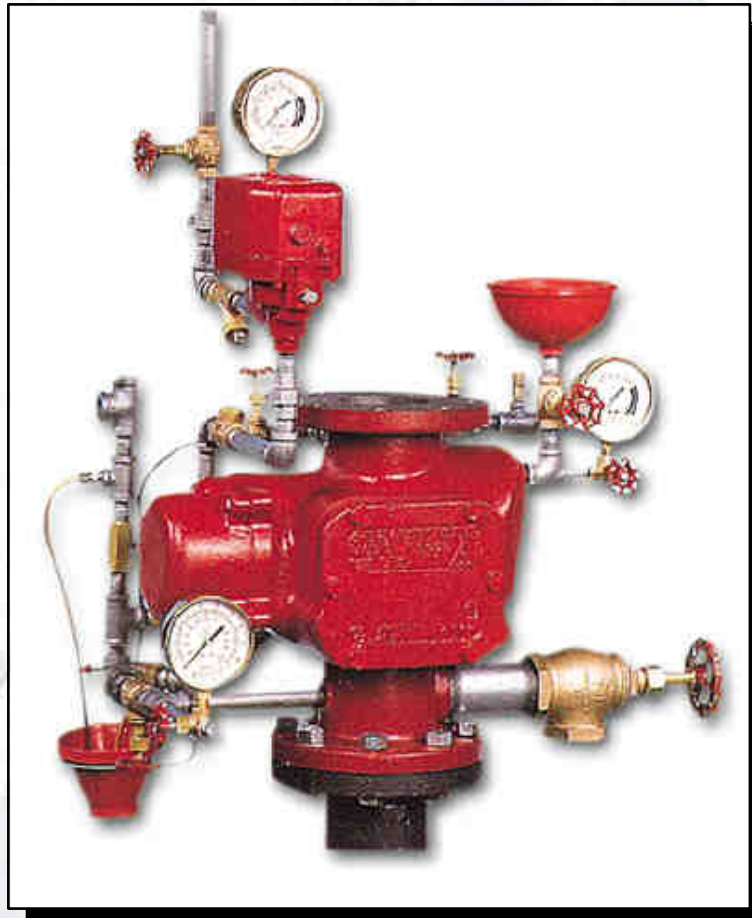




F302 Dry Pipe Valve



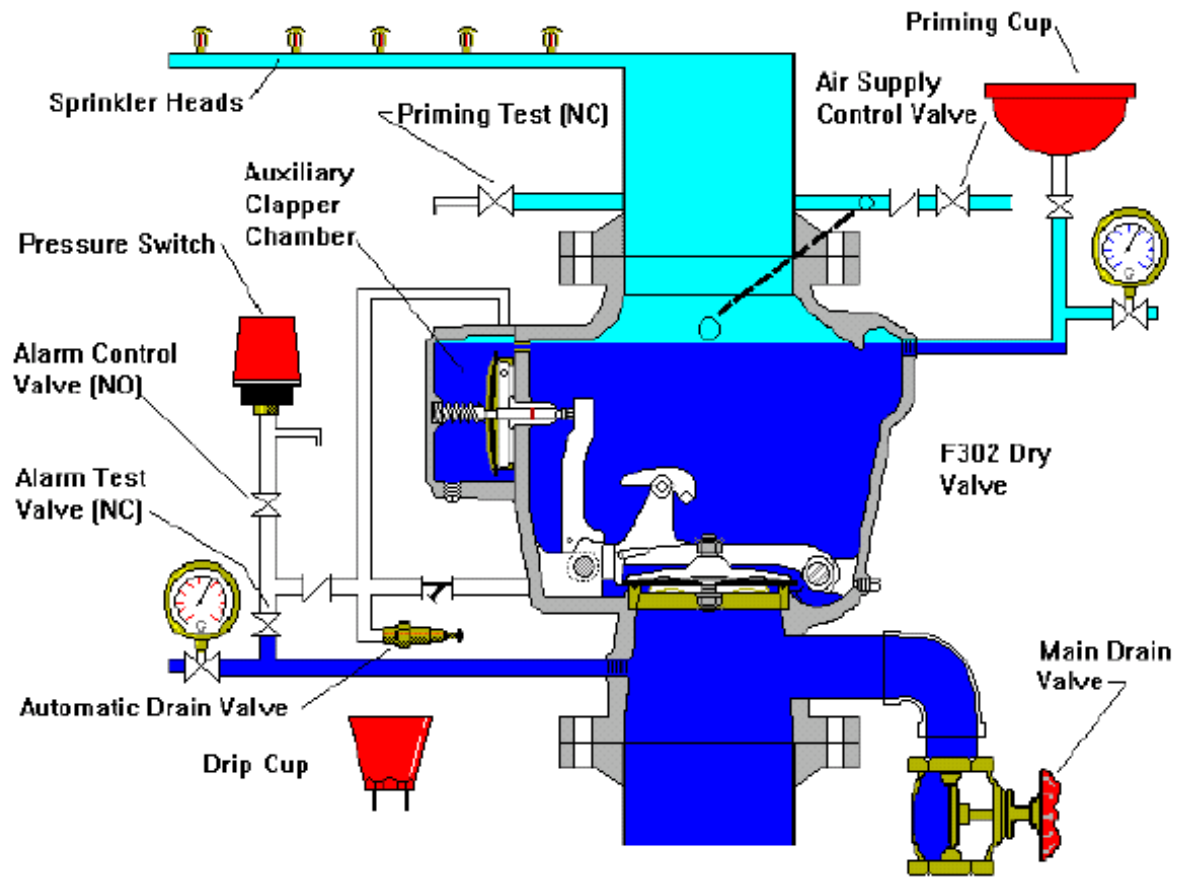
- Available in 4" & 6" Flanged or Grooved outlet on Model F302 Valve
- Lightest Weight Dry Valve on Marketplace
- UL/ULC Listed and FM Approved
- Is used in areas subject to freezing conditions such as Unheated Warehouses, Loading Docks, Attic Areas, etc.
- Pre-Assembled Trim
- How Does it Work?...

[Return](#)

[Step by Step](#)

[Play Movie](#)

F302 Dry Pipe Valve

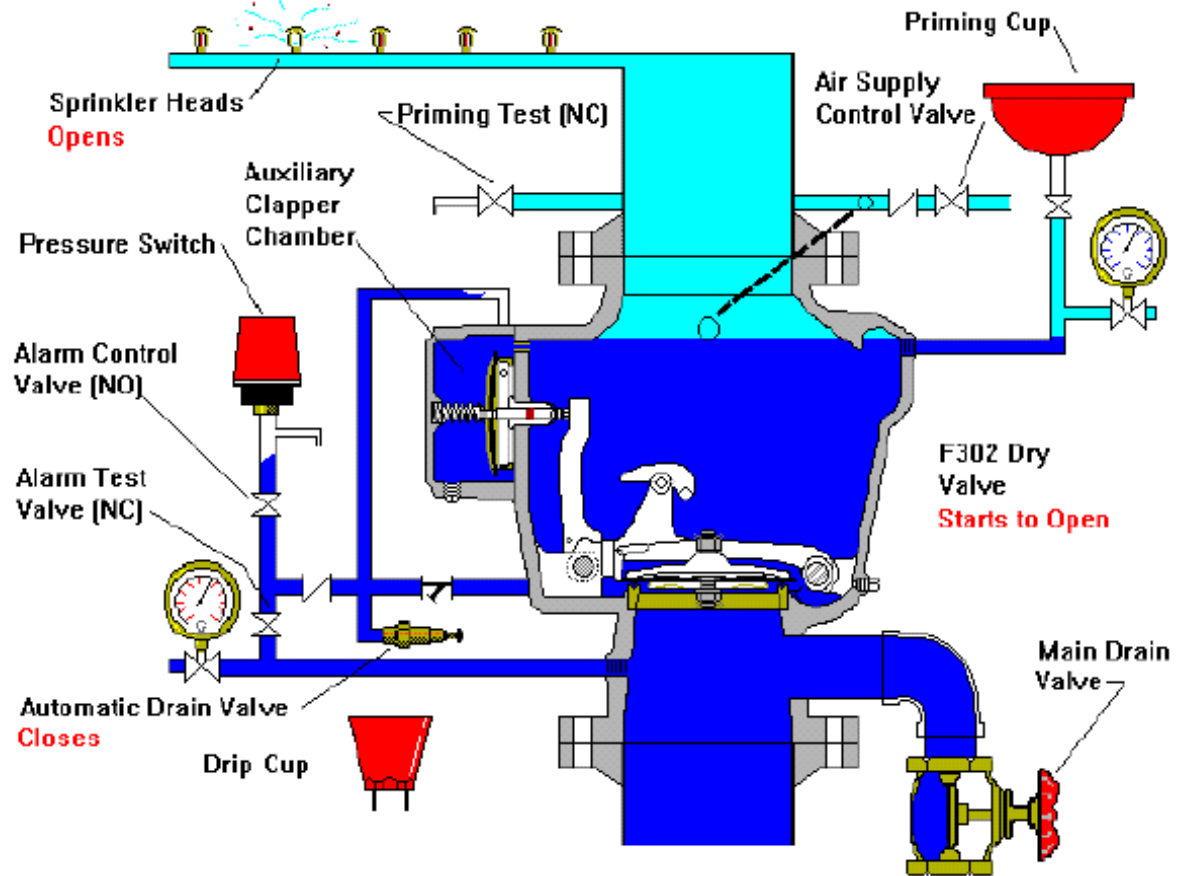


(1) System Normal

Return

Next

F302 Dry Pipe Valve



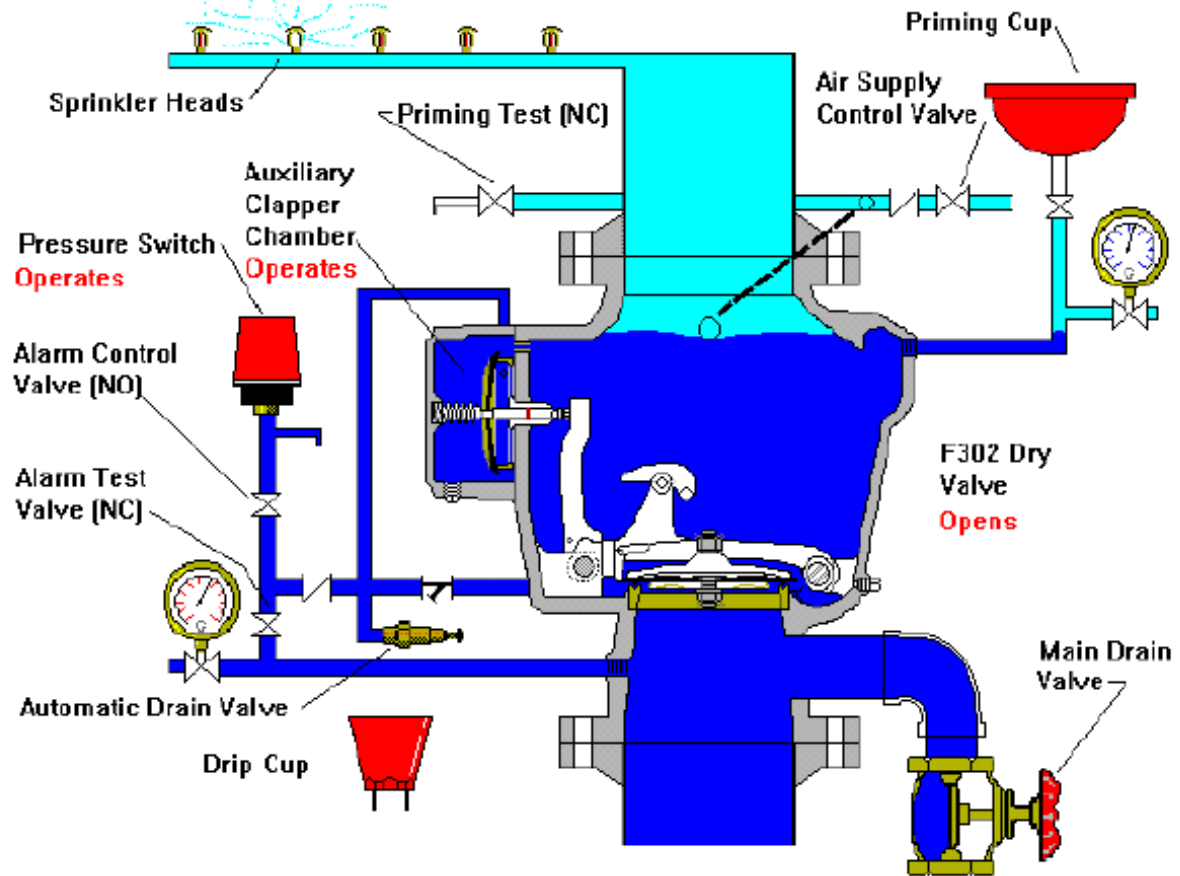
(2) Sprinkler Head(s) Opens, Automatic Drain Valve Closes

Return

Back

Next

F302 Dry Pipe Valve



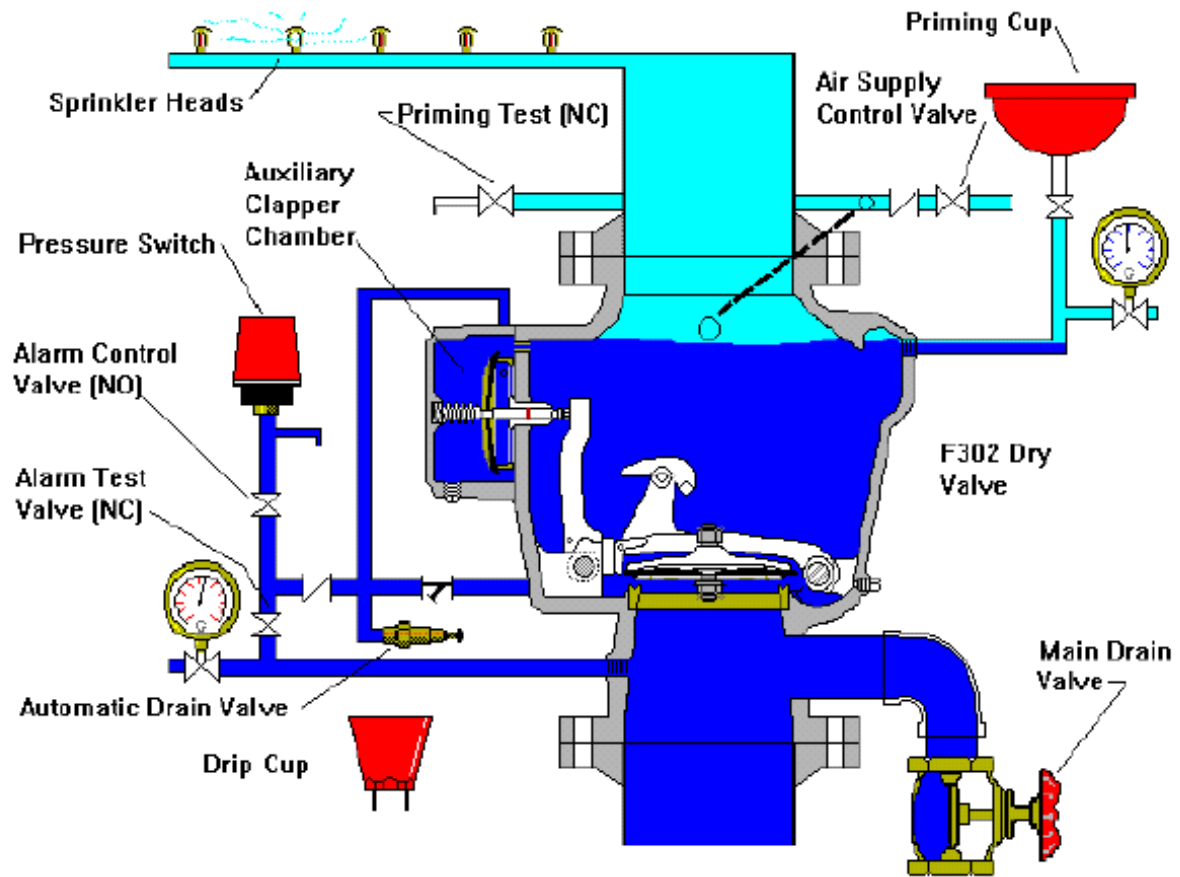
(3) Dry Valve Opens

Return

Back

Next

F302 Dry Pipe Valve



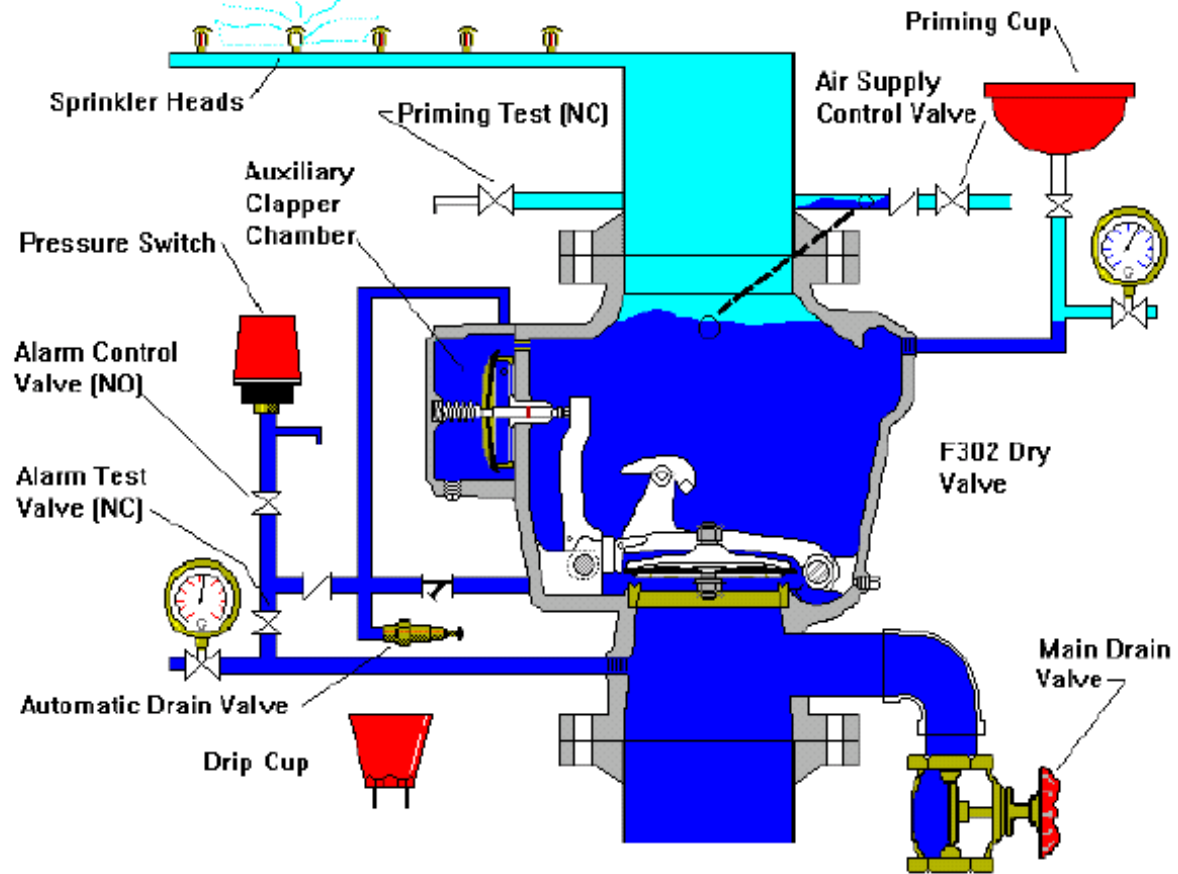
(4) System Fills With Water

Return

Back

Next

F302 Dry Pipe Valve



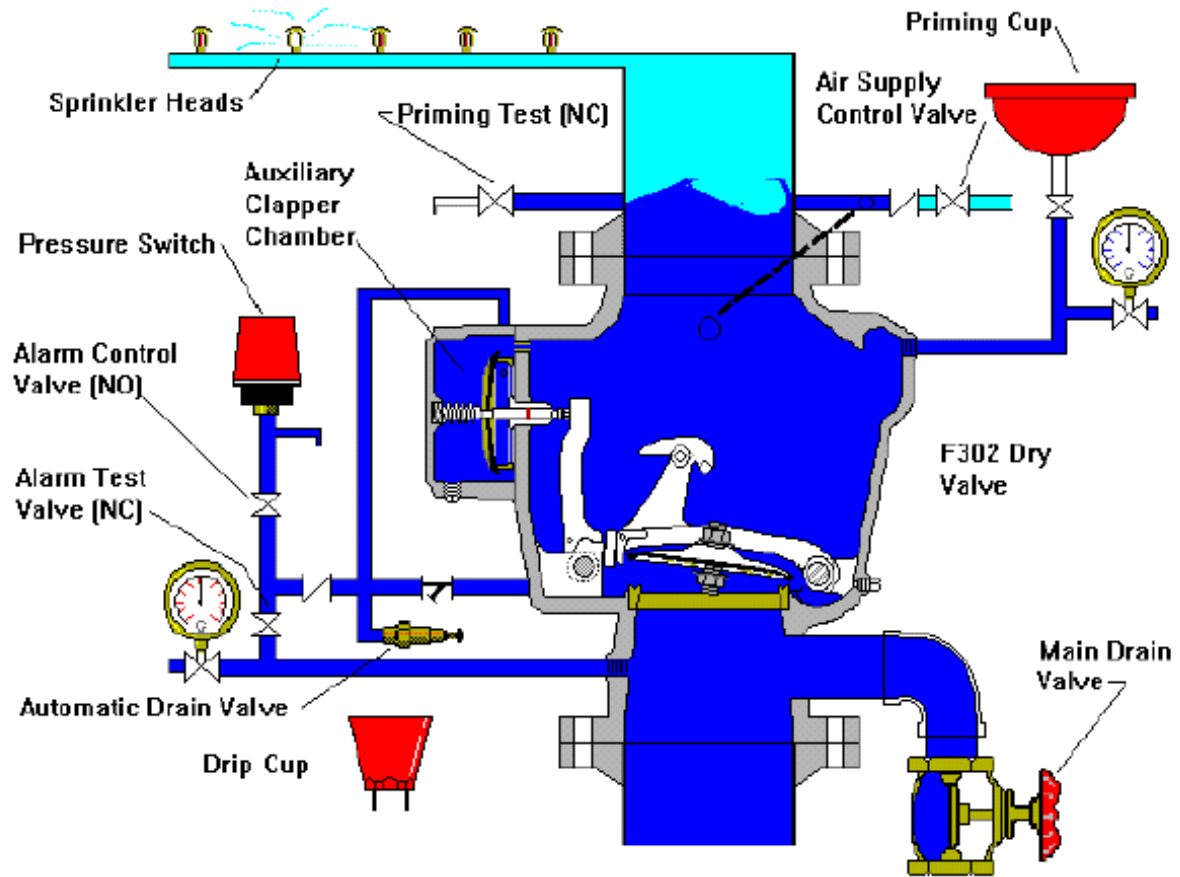
(4) System Fills With Water

Return

Back

Next

F302 Dry Pipe Valve



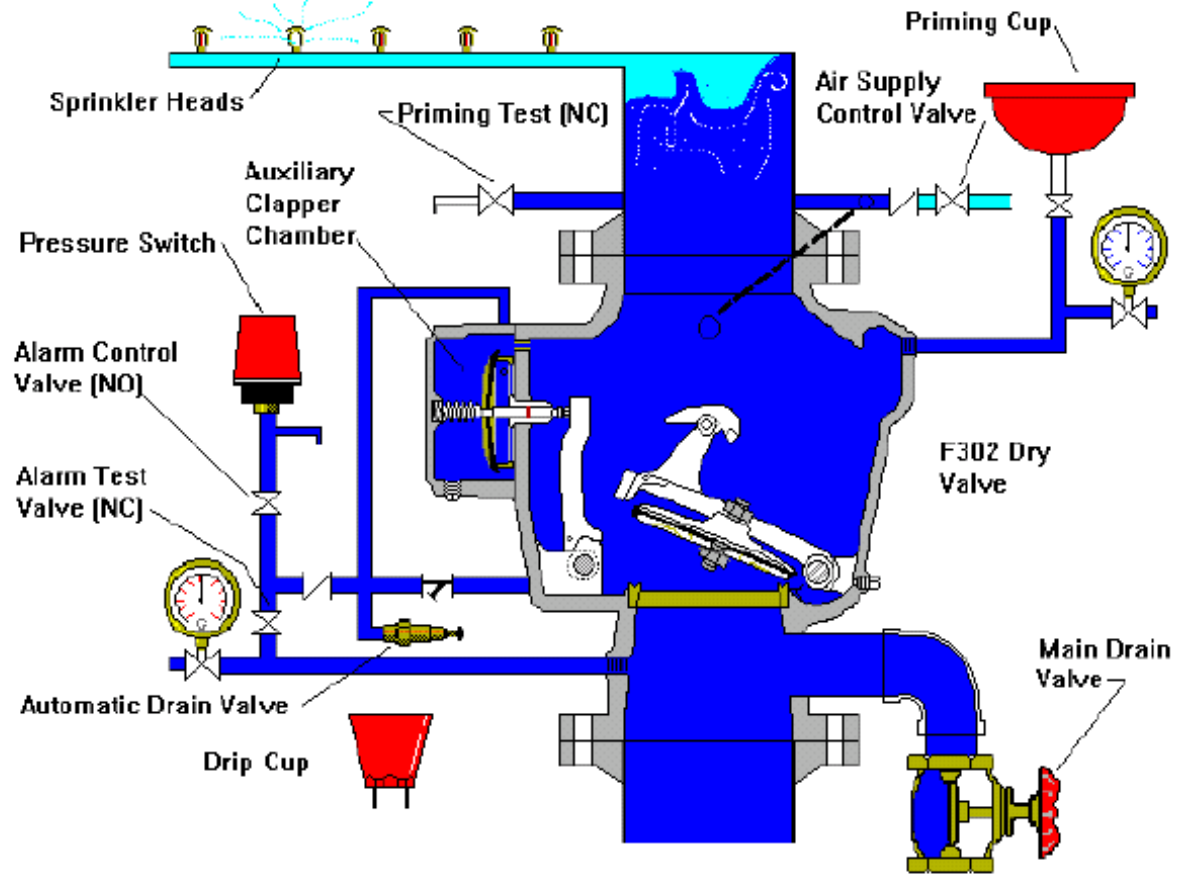
(4) System Fills With Water

Return

Back

Next

F302 Dry Pipe Valve



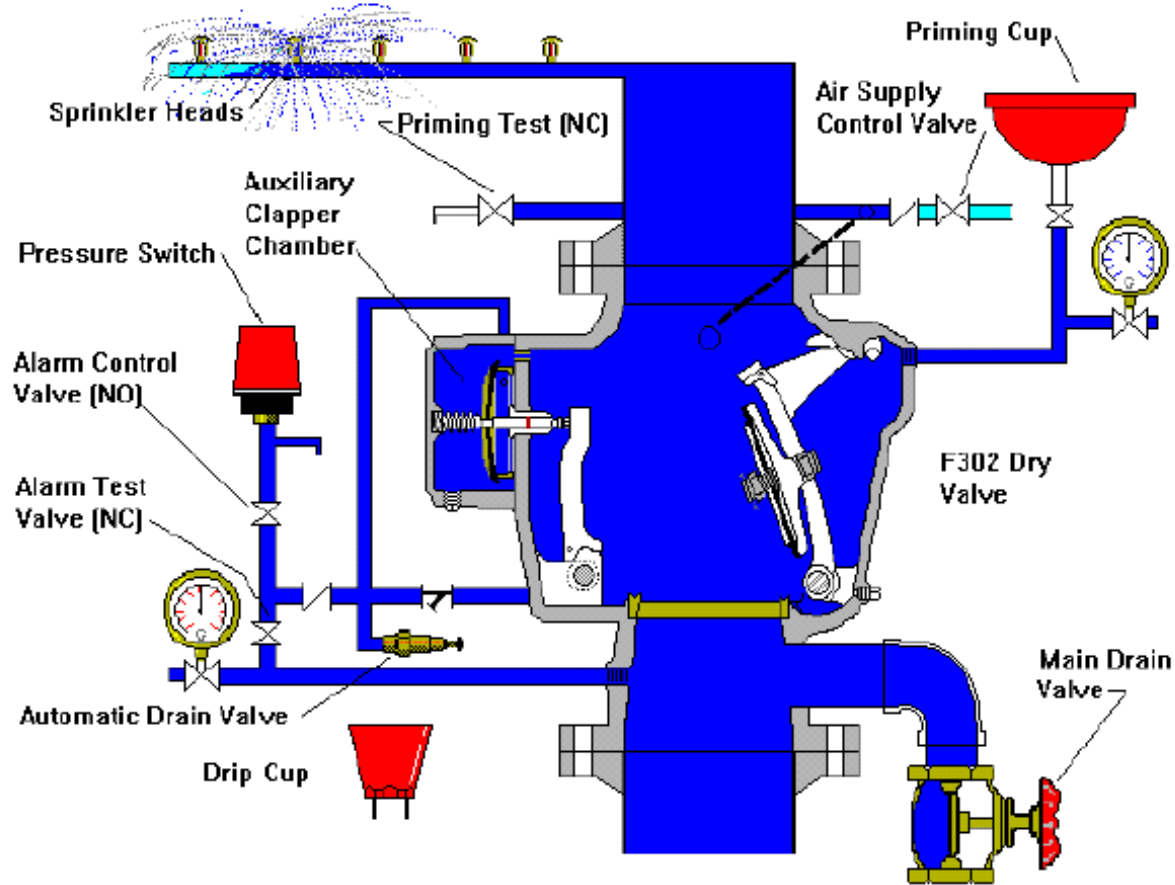
(4) System Fills With Water

Return

Back

Next

F302 Dry Pipe Valve



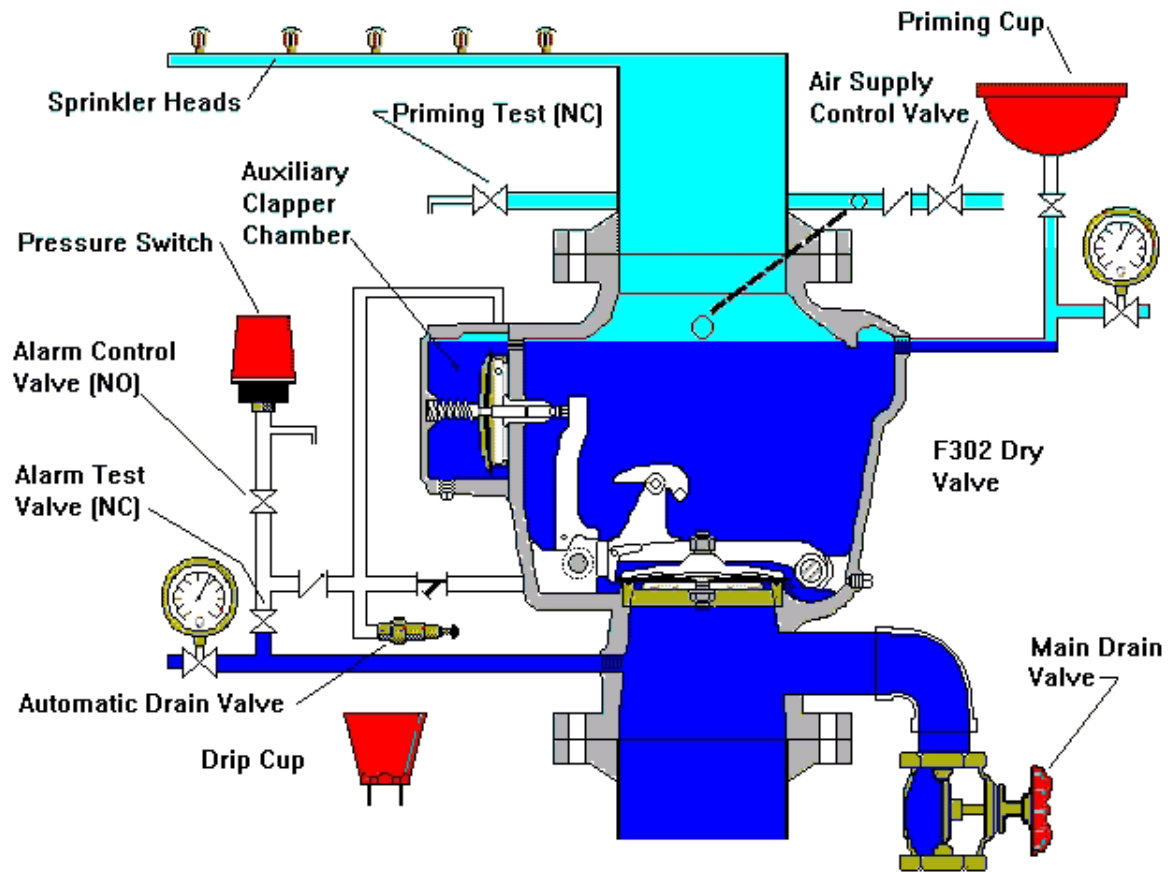
(5) Sprinkler Head(s) Discharge Water

Return

Back

Next

F302 Dry Pipe Valve



Return