



# F470 Deluge Valve



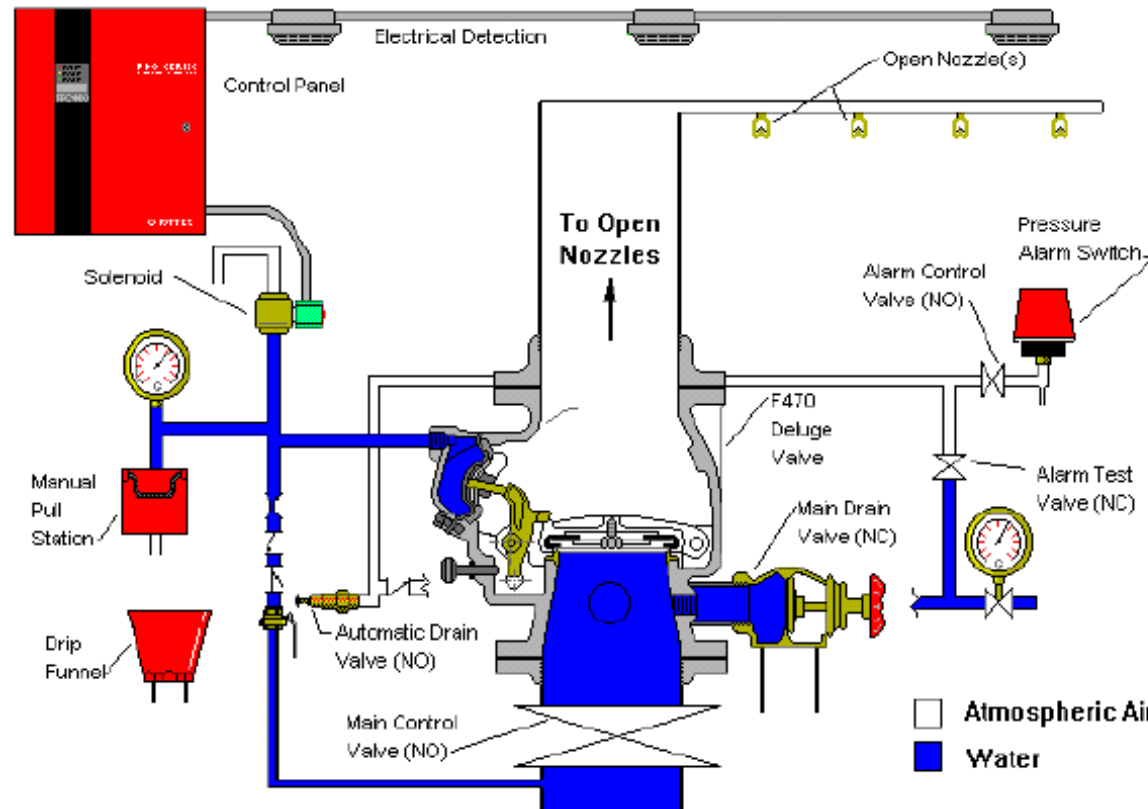
- Electric Actuation Trim
- UL,ULC Listed and FM Approved
- External Reset with the F470 Valve
- Can be used with the D-3, Mulsifyre, or HV Nozzles
- Commonly used in protection of transformers, conveyors, chemical plants, etc.
- Refer to Technical Data Sheet TD 116 for information
- How Does it Work?...

[Return](#)

[Step by Step](#)

[Play Movie](#)

# F470 Deluge Valve

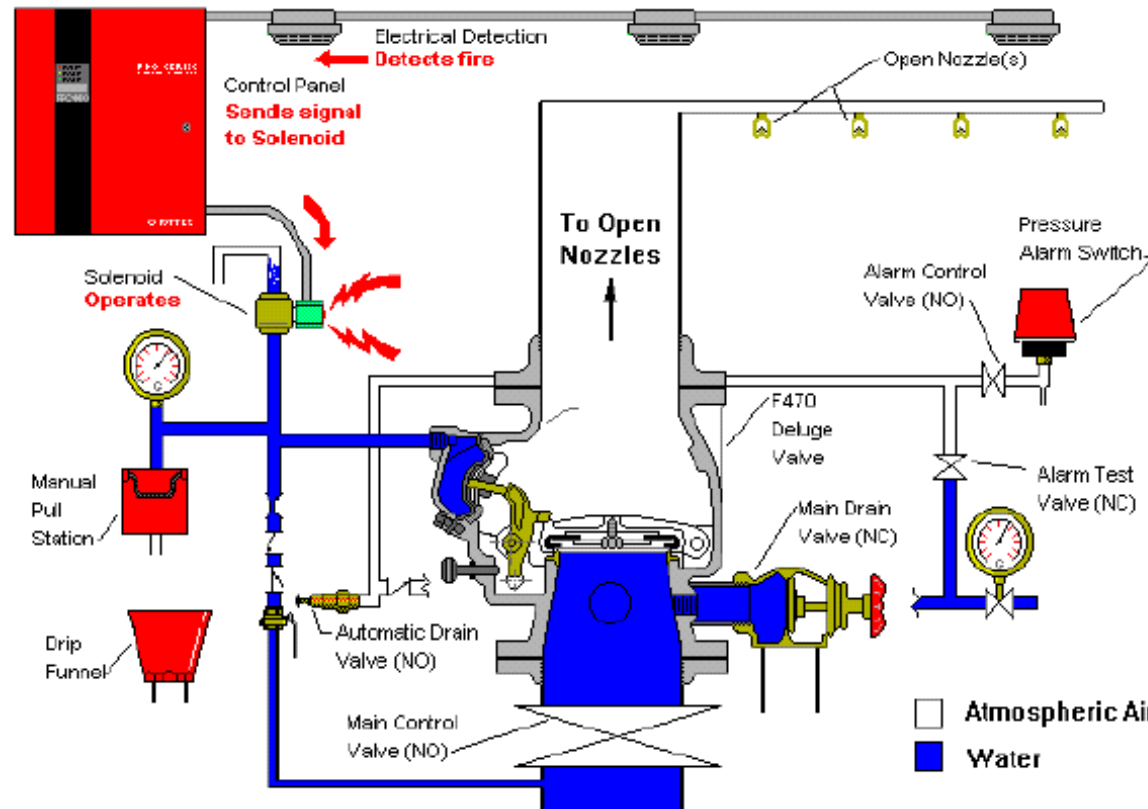


(1) System Normal

Return

Next

# F470 Deluge Valve



(2) Solenoid Operates

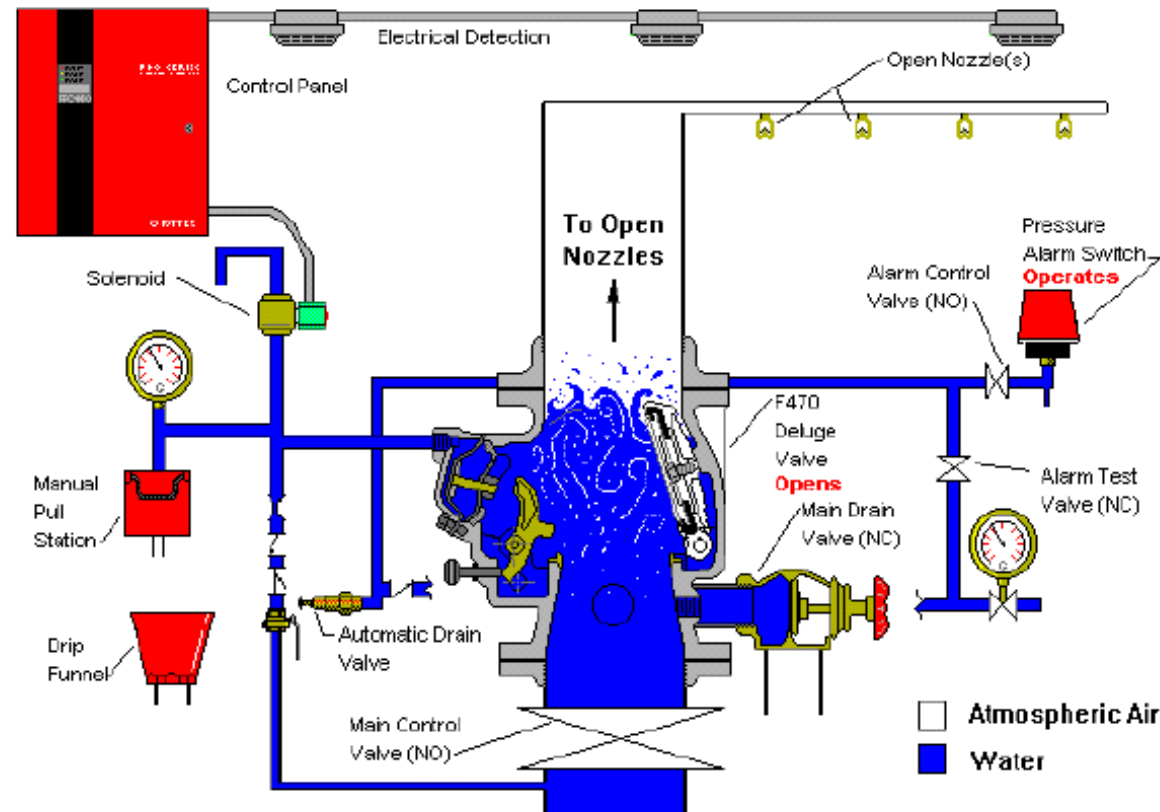
Return

Back

Next



# F470 Deluge Valve



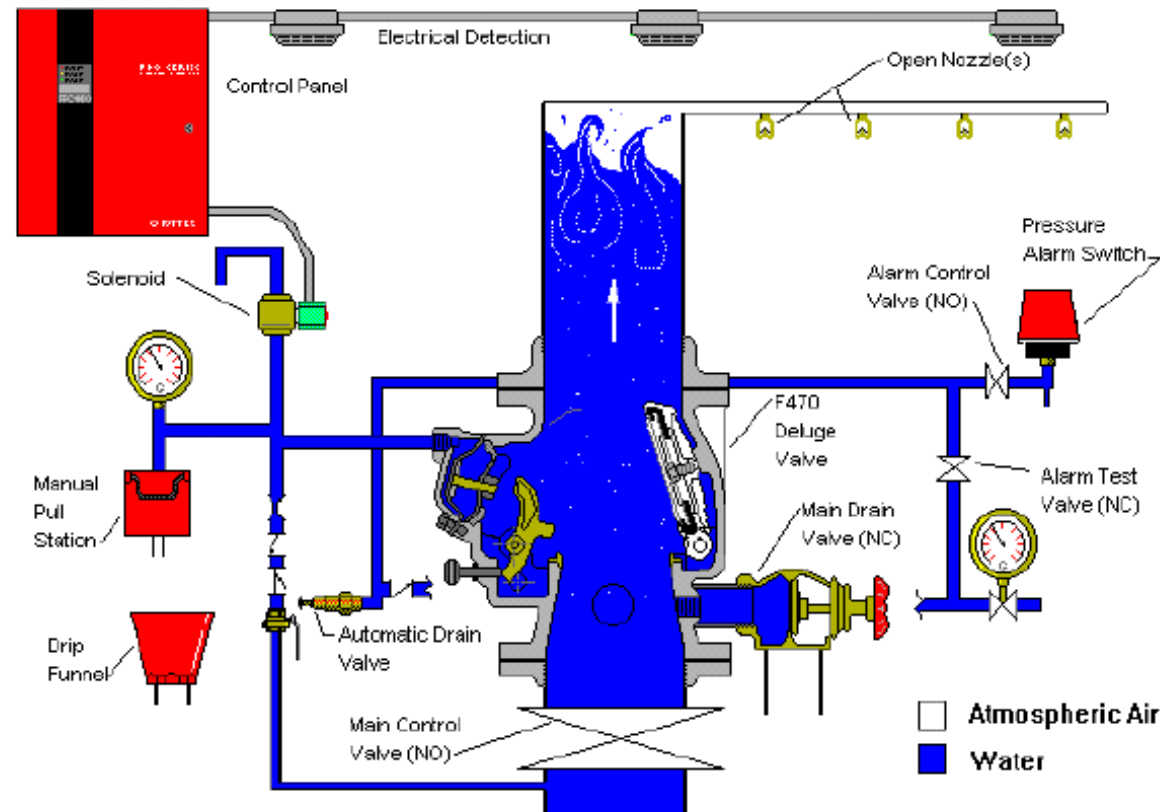
**(4) Valve Opens Completely**

Return

Back

Next

# F470 Deluge Valve



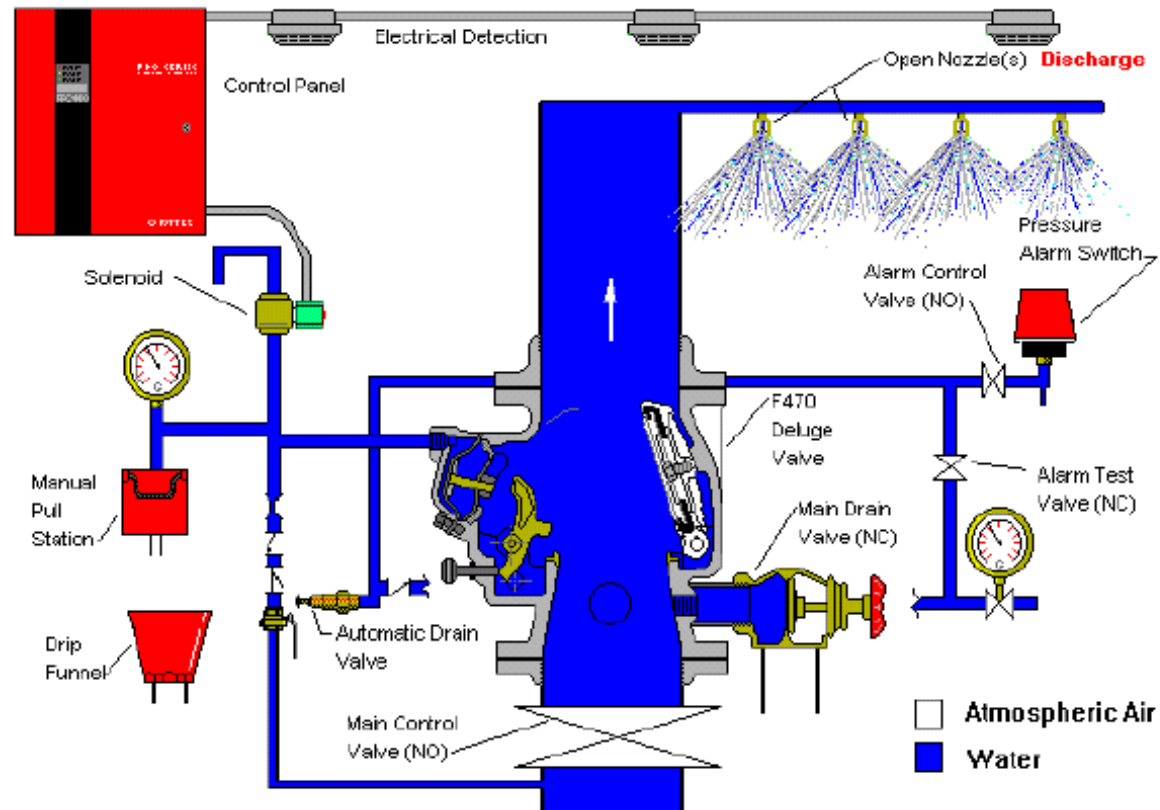
(5) Water Flows Through System

Return

Back

Next

# F470 Deluge Valve

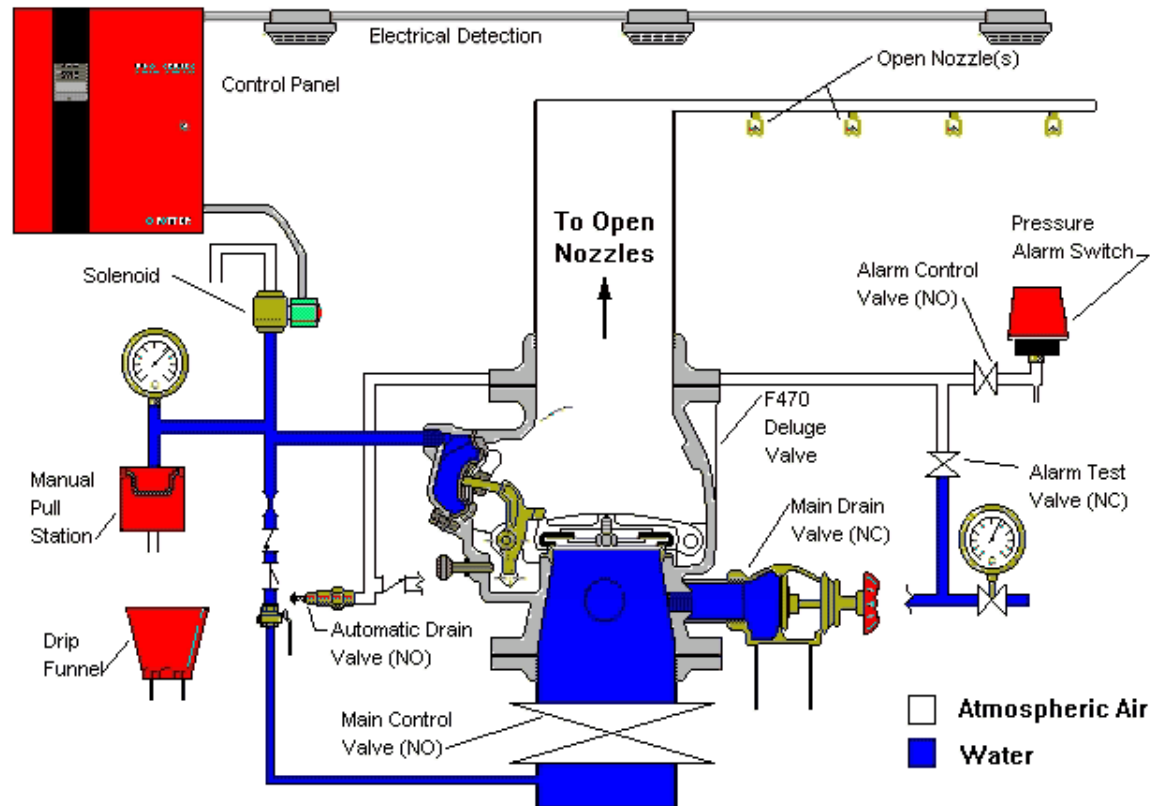


(6) Open Nozzles Discharge

Return

Back

# F470 Deluge Valve



Return