



Document CEN/TC 191

N 1654

Ref: CEN/TC 191

Date: 18 December 2019

**To the Members of CEN/TC 191
Fixed firefighting systems****Secretariat of CEN/TC 191**

Direct tel: 44 208 996 7107

E-mail: mike.leggett@bsigroup.comWeb: www.bsigroup.com

Dear Member,

POSSIBLE ERROR IN EN 16925:2019

I have received notification from Norway of errors with Table 6 and Table 7 which are now presented in reverse order. The text of the notification is attached as Annex A.

After consultation with the Chairman and others involved with the development of this Standard, it has been confirmed that this is an error.

Following consultation with the CEN-CENELEC Management Centre (CCMC), I have been asked to submit the request for possible issue of a corrigendum.

A marked version of the corrected text which will be used to prepare the corrigendum is presented in the Annex B attached.

The request for a corrigendum will be sent to CCMC in the near future.

Yours sincerely

Dr M J Leggett

For the Secretariat of CEN/TC 191

N1654 Annex A

To the Secretariat of CEN/TC 191

Dear Sirs,

Members of the Norwegian mirror committee of CEN/TC 191, have made me aware of the following:

Unfortunately, there has been a mistake in **EN 16925:2018**. This applies to Tables 6 and 7. The tables shall be in reverse order.

It is especially critical on Table 7 that now has obstacles in front of the sprinkler, but should be obstacles to the sprinkler side.

[...]

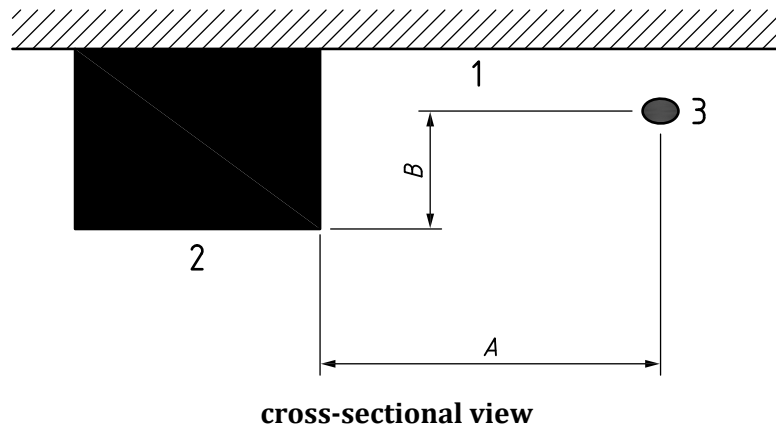
Kind regards,

Ulla Gjerdrum
Project Manager
Standards Norway,

Table 6 — Sidewall sprinkler distances and maximum depth of an obstruction located perpendicular to the direction of throw

Distance from sidewall sprinkler to side of obstruction (A)	Maximum allowable distance of deflector above bottom of obstruction (B)
Less than 2,4 m	Not allowed
2,4 m to less than 3 m	25 mm
3 m to less than 3,3 m	50 mm
3,3 mm to less than 3,6 m	75 mm
3,6 m to less than 3,9 m	100 mm
3,9 m to less than 4,2 m	150 mm
4,2 m to less than 4,5 m	175 mm
4,5 m to less than 4,8 m	225 mm
4,8 m to less than 5,1 m	275 mm
5,1 m or greater	350 mm

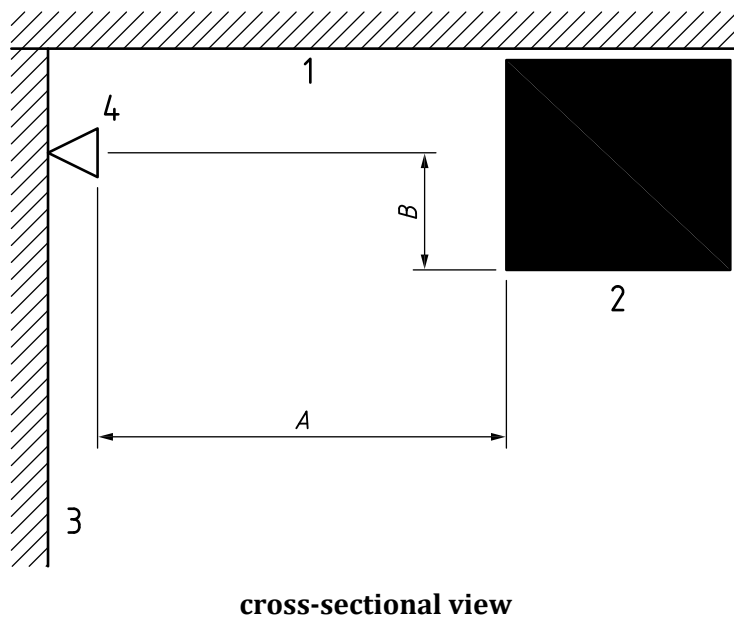
<u>Distance from sidewall sprinkler to side of obstruction (A)</u>	<u>Maximum allowable distance of deflector above bottom of obstruction (B)</u>
<u>Less than 450 mm</u>	<u>0</u>
<u>450 mm to less than 900 mm</u>	<u>25 mm</u>
<u>900 mm to less than 1 200 mm</u>	<u>75 mm</u>
<u>1 200 mm to less than 1 350 mm</u>	<u>125 mm</u>
<u>1 350 mm to less than 1 800 mm</u>	<u>175 mm</u>
<u>1 800 mm to less than 1 950 mm</u>	<u>225 mm</u>
<u>1 950 mm to less than 2 100 mm</u>	<u>275 mm</u>
<u>2 100 mm to less than 2 250 mm</u>	<u>350 mm</u>



Key

- 1 ceiling
- 2 obstruction
- 3 sprinkler
- A distance from sidewall sprinkler to side of obstruction
- B distance of deflector above bottom of obstruction

Figure 12 — Position of sidewall sprinklers to avoid obstructions located perpendicular to the direction of throw



Key

- 1 ceiling
- 2 obstruction
- 3 wall
- 4 sprinkler
- A distance from sidewall sprinkler to side of obstruction

B distance of deflector above bottom of obstruction

Figure 13 — Position of sidewall sprinklers to avoid obstacles to discharge

Table 7 — Position of sidewall sprinklers to avoid obstacles to discharge

Distance from sidewall sprinkler to side of obstruction (A)	Maximum allowable distance of deflector above bottom of obstruction (B)
Less than 450 mm	0
450 mm to less than 900 mm	25 mm
900 mm to less than 1 200 mm	75 mm
1 200 mm to less than 1 350 mm	125 mm
1 350 mm to less than 1 800 mm	175 mm
1 800 mm to less than 1 950 mm	225 mm
1 950 mm to less than 2 100 mm	275 mm
2 100 mm to less than 2 250 mm	350 mm

<u>Distance from sidewall sprinkler to side of obstruction (A)</u>	<u>Maximum allowable distance of deflector above bottom of obstruction (B)</u>
<u>Less than 2,4 m</u>	<u>Not allowed</u>
<u>2,4 m to less than 3 m</u>	<u>25 mm</u>
<u>3 m to less than 3,3 m</u>	<u>50 mm</u>
<u>3,3 m to less than 3,6 m</u>	<u>75 mm</u>
<u>3,6 m to less than 3,9 m</u>	<u>100 mm</u>
<u>3,9 m to less than 4,2 m</u>	<u>150 mm</u>
<u>4,2 m to less than 4,5 m</u>	<u>175 mm</u>
<u>4,5 m to less than 4,8 m</u>	<u>225 mm</u>
<u>4,8 m to less than 5,1 m</u>	<u>275 mm</u>
<u>5,1 m or greater</u>	<u>350 mm</u>